

CASE HISTORY REPORT

INPRO/SEAL

CUSTOMER : ARCELOR
SOLLAC FOS

LOCATION : FOS-SUR-MER - Marseille
France

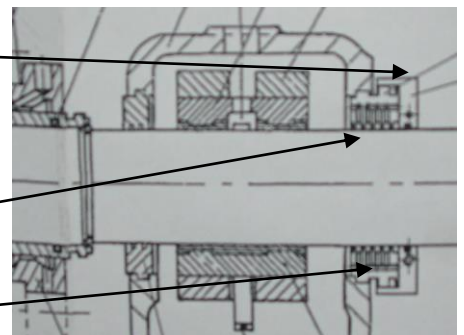
INDUSTRY : Steel Mill
Integrated Plant

END PRODUCT : Steel Foil

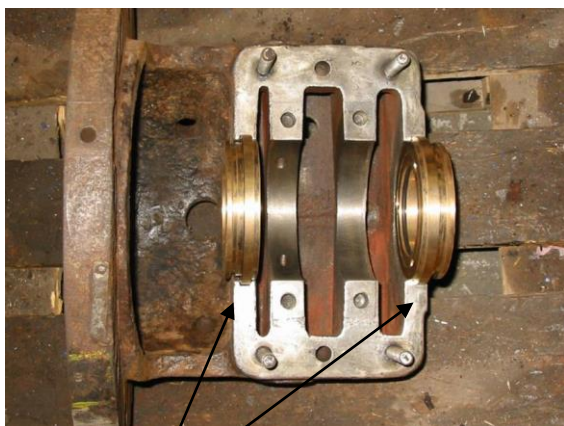
SOLLAC – Fos, belonging to the ARCELOR Group (Usinor–Sacilor) is an integrated plant for the production of steel, located in South of France (Mediterranean coast).

The Energy department, electricity and steam production, used KSB Multistage pump, type HDBS. The stuffing boxes are sealed by compression packing, without really performing results. The packing are continuously leaking, and water leakage over 180 °C (\pm 350 F°) makes big cloud of steam, directly in the bearing housing.

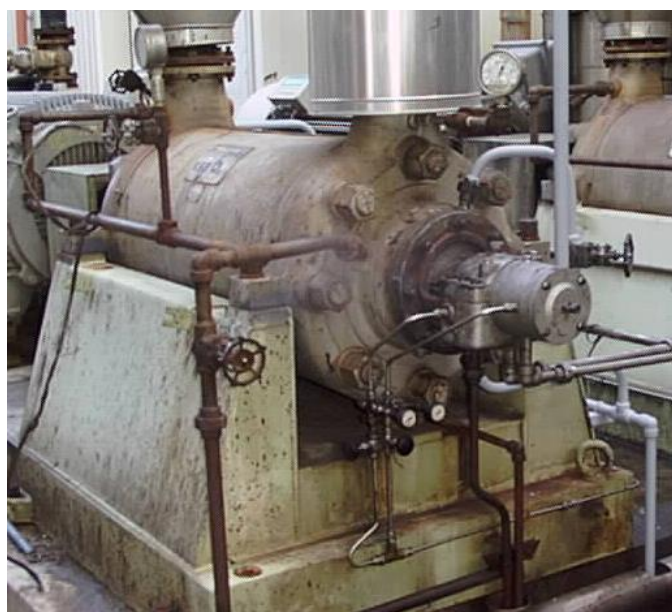
The two split sleeve bearing housings are sealed by an OEM labyrinth, made of a solid flinger and split oil baffles.



The distributor in collaboration with KSB-Service Aix-En-Provence made a statement of dimensions, and proposes an INPRO/SEAL Bearing Isolator TURBINE FIT MOUNT, for an installation without modification of the half bearing housing.



Inpro B.I



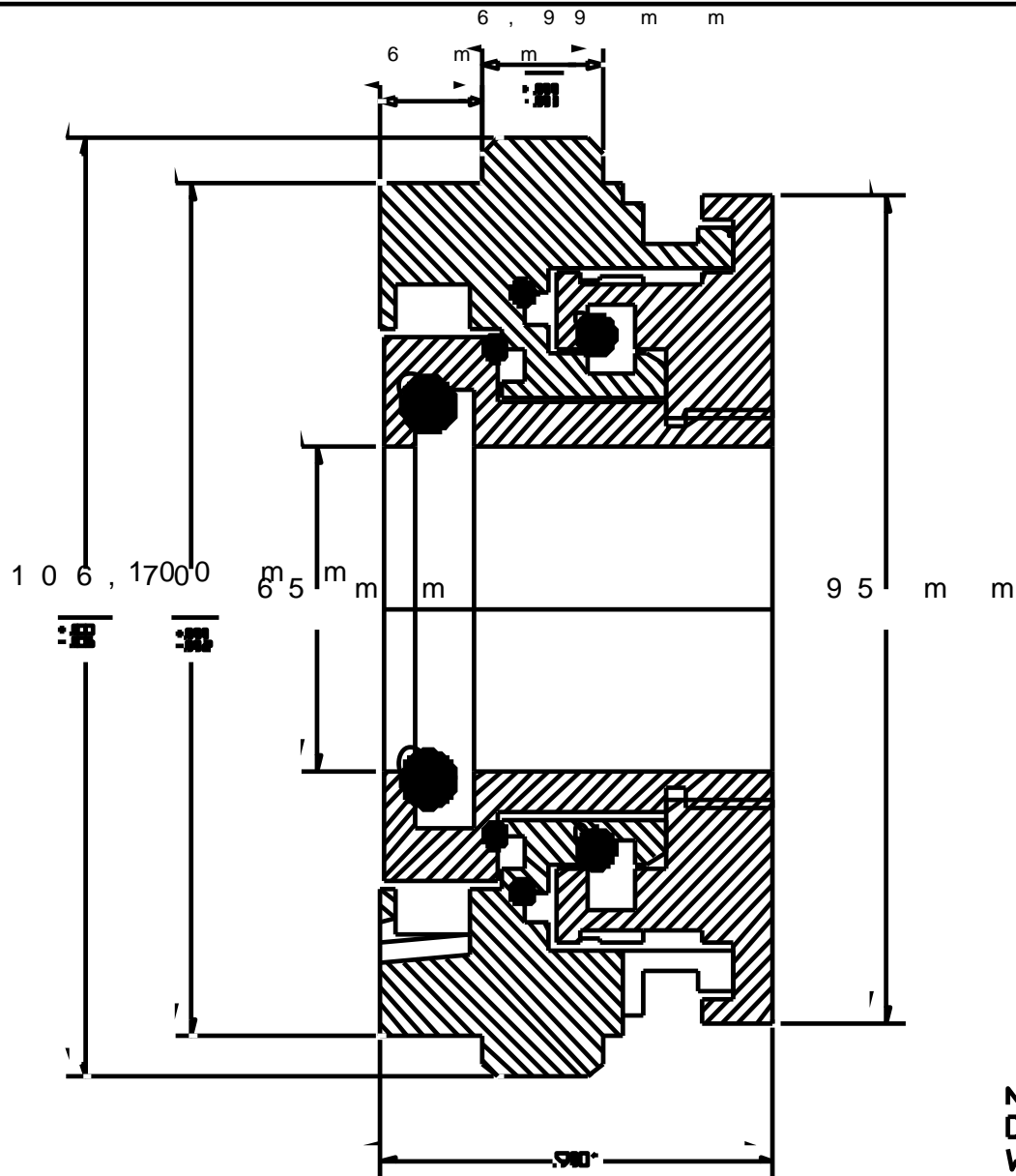
As soon as the pump has been installed, the performance of our Bearing isolators, have been established: ZERO CONTAMINANT in Oil.

TECHNICAL DETAILS :

Manufacturer: KSB, multistage pump, Type HDBS-125/7.

Shaft size: Ø 65 mm

Inpro B.I: VBXX-D – UNITARY – TURBINE FIT MOUNT
P/N°: 4901-A-22339-0



NOTE: .900" OAL VBXXD UNITARY DESIGN WITH TURBINE STYLE FIT WITH RULON BUMPERS



REVS:	WLS
REVS:	
REVS:	

THIS DRAWING INCLUDING THE DESIGN AND PRINCIPLES OF CONSTRUCTION DISCLOSED IS THE PROPERTY OF INPRO COMPANIES, INC. AND IS SUBMITTED WITH THE UNDERSTANDING THAT IT IS NOT TO BE REPRODUCED NOR COPIED IN WHOLE OR IN PART NOR LOANED OR OTHERWISE COMMUNICATED TO ANY THIRD PARTY NOR USED IN ANY MANNER DETRIMENTAL TO THE INTERESTS OF INPRO COMPANIES, INC. ACCEPTANCE OF THIS DRAWING WILL BE CONSTRUED AS AN AGREEMENT TO THE ABOVE.

U.S. PATENTS:	
5,378,000	5,069,461
5,335,921	4,989,883
5,221,095	4,706,968
5,161,804	4,466,620
5,158,304	4,304,409
5,137,049	4,175,752
5,074,567	4,114,902

INPRO/SEAL	
BEARING ISOLATOR	
DATE 13 MAR 03	AND OTHERS PENDING

