

# CASE HISTORY REPORT



# INPRO/SEAL

Company name: **Continental Industries**

Location: **AIN (01) Dept  
France**

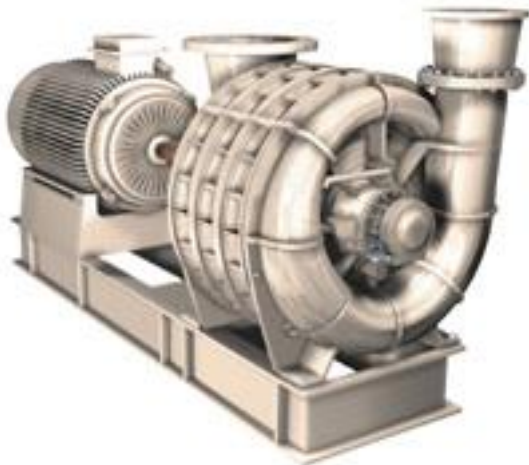
Industry: **O.E.M**

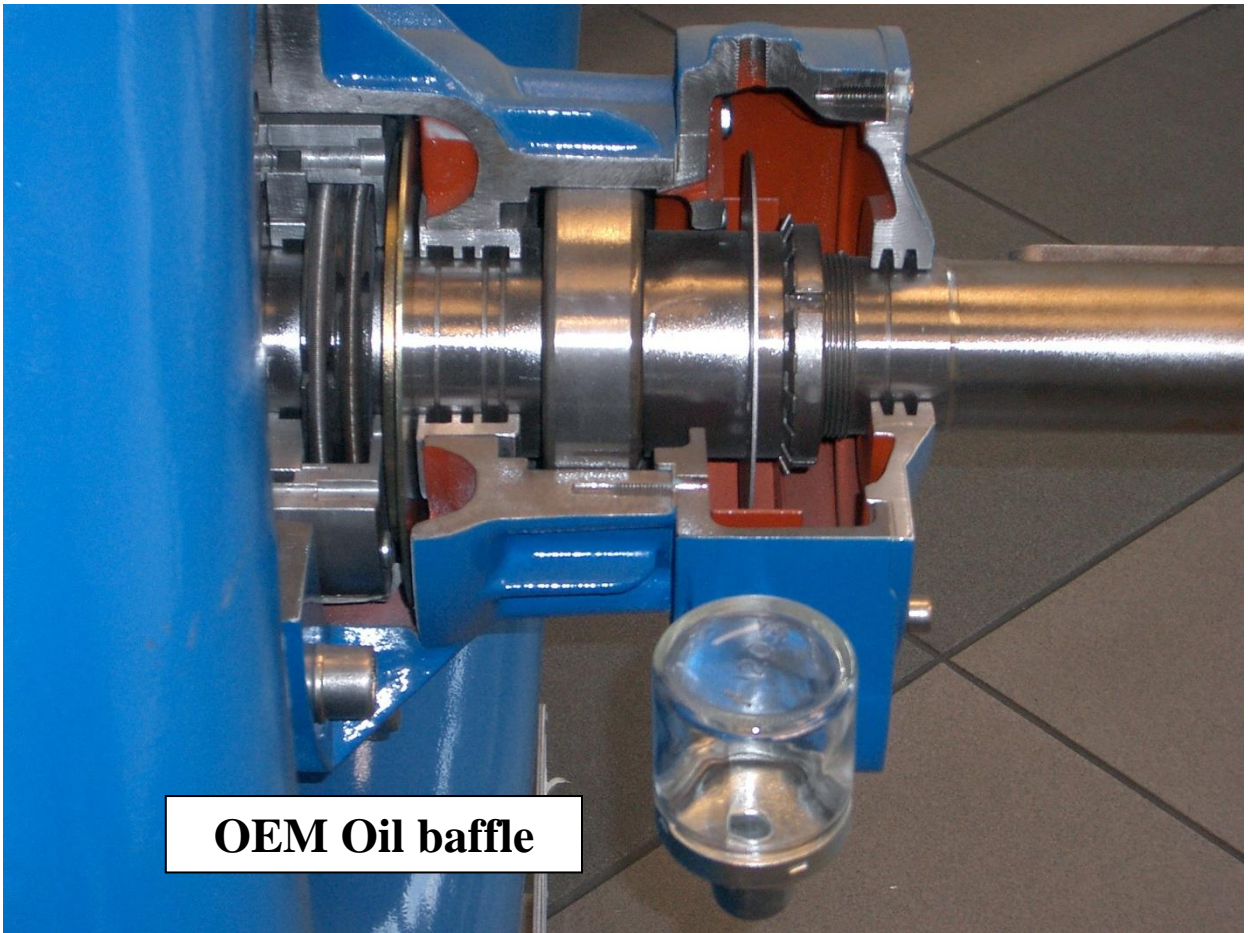
**Continental Industrie S.A.S** is a manufacturer of centrifugal blower. In 2003 INPRO/SEAL Bearing Isolator is requested by an end user.

The R.M and the distributor after a visit to the plant, proposed to install Floating O-Ring Design in Aluminum/SS Steel: any copper alloy was prohibited for this plant.

After this first installation, others machines have been fitted with OM-32 Design, for oil mist lubrication. Standard CODE 1987 and Floating O-Ring Design in Bronze Rotor & Stator for standard oil splashing application.

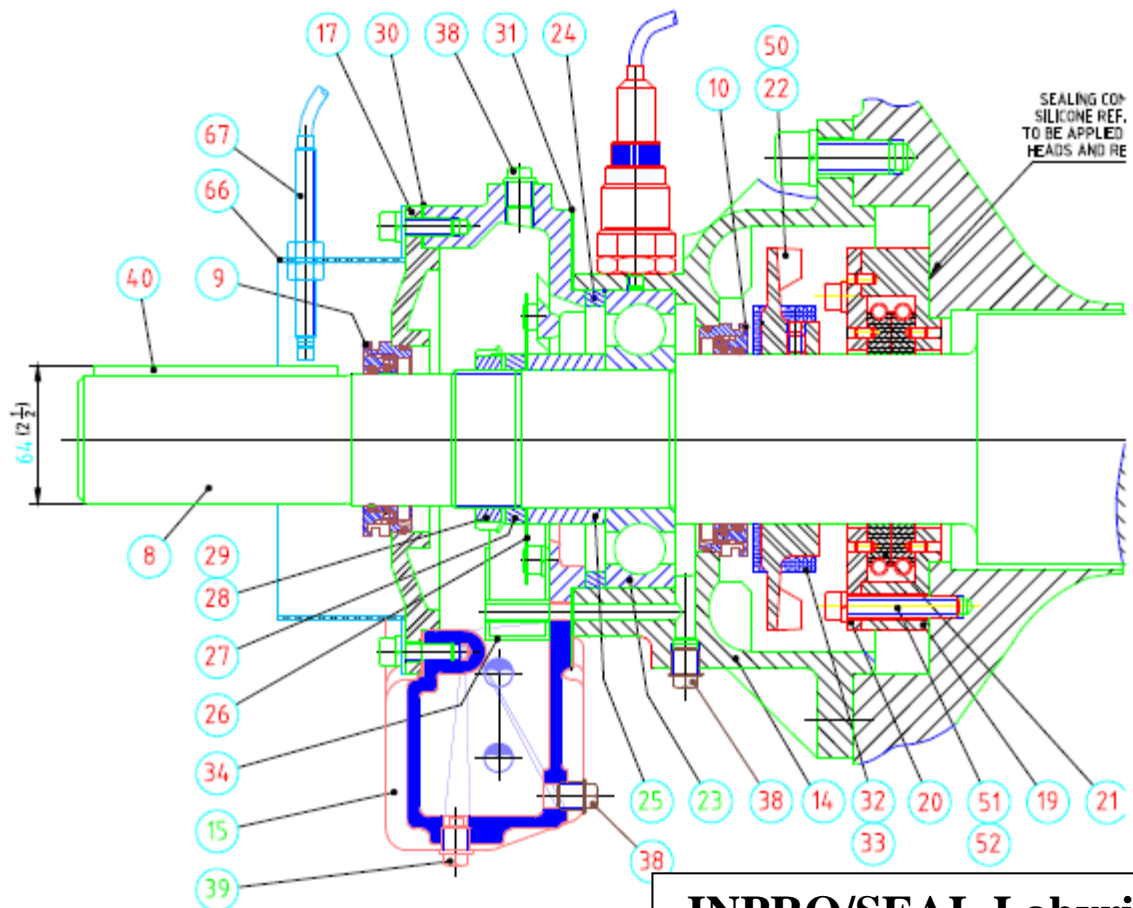
At this date, regularly Continental Industrie installs INPRO/SEAL Bearing Isolator on request or to increase the expecting during life of their machine.





**OEM Oil baffle**

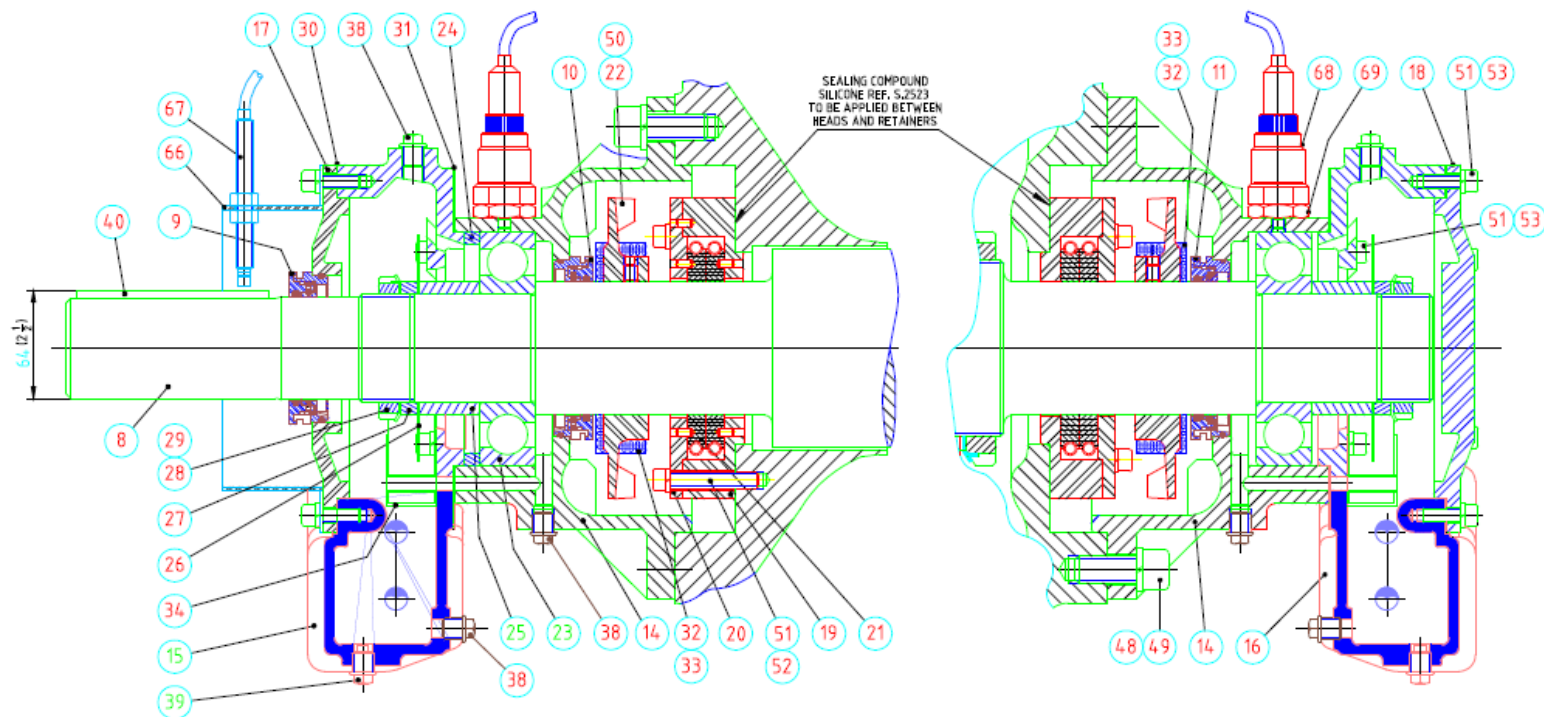
INLET BEARING HOUSING DETAIL



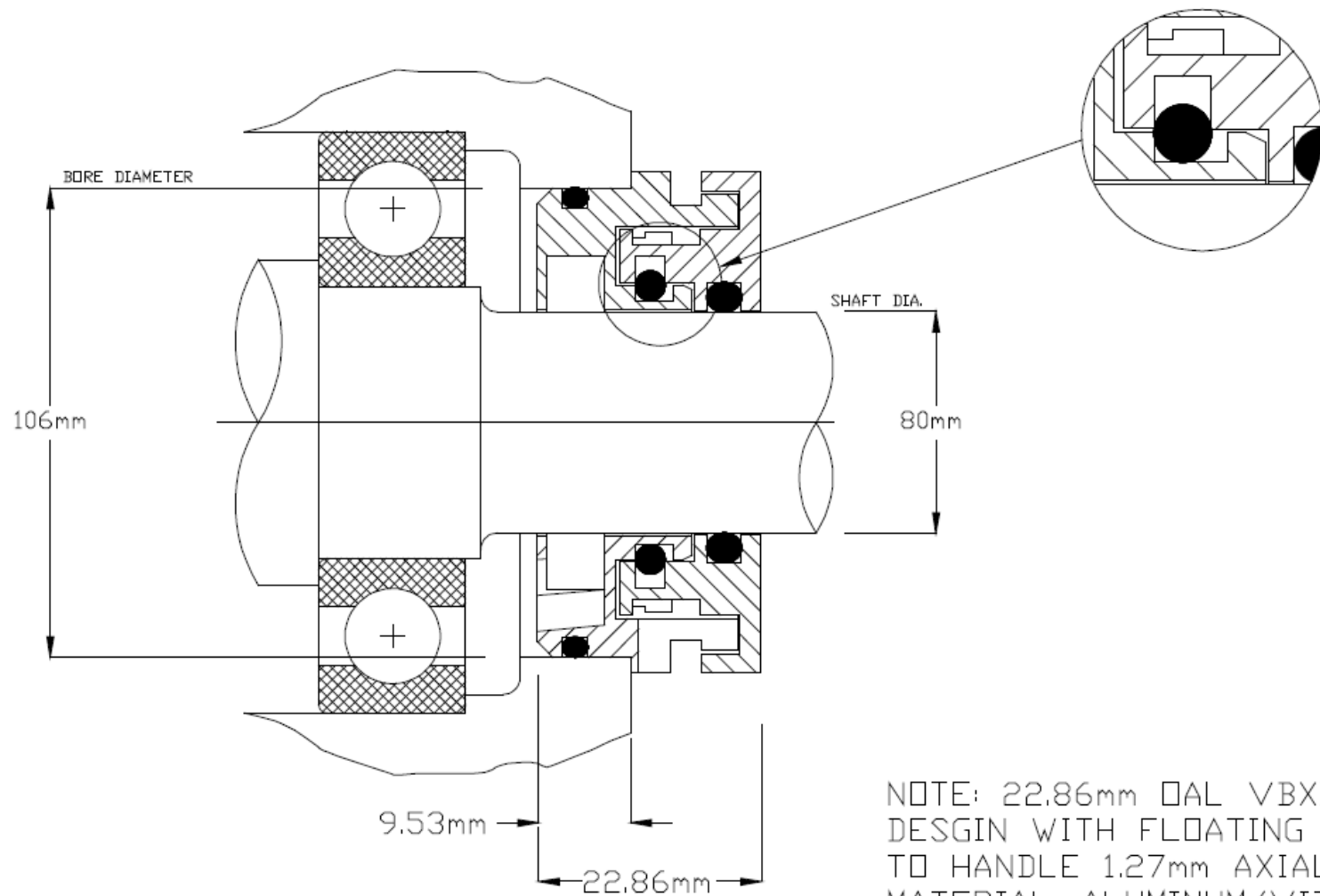
**INPRO/SEAL Labyrinths**

### INLET BEARING HOUSING DETAIL


### OUTLET BEARING HOUSING DETAIL



CONTINENTAL INDUSTRIE S.A	TYPE 15106A RT INLET END DRIVE		ASSEMBLY :	
S <sup>T</sup> TRIVIER/MOIGNANS FRANCE	SECTIONAL DRAWING - HOUSING BEARING DETAIL CARBON SEAL RING & INPRO/SEAL		DATE : 02/06/2006	
Y/ORDER N° : 15 048.A			SCALE : 1 : 3	
ORDER N° : AR.013119	DR : TF	CHKD. B.D	SIZE : A3	
REVISIONS :			DWG No.	Rev.
This drawing is a property of Continental Industrie, FRANCE			151-0op-bis	0



NOTE: 22.86mm OAL VBXX-D LOW HEAD  
 DESIGN WITH FLOATING VBX RING  
 TO HANDLE 1.27mm AXIAL MOVEMENT  
 MATERIAL: ALUMINUM/VITON

REVS:	WLS	THIS DRAWING INCLUDING THE DESIGN AND PRINCIPLES OF CONSTRUCTION DISCLOSED IS THE PROPERTY OF INPRO COMPANIES, INC. AND IS SUBMITTED WITH THE UNDERSTANDING THAT IT IS NOT TO BE REPRODUCED NOR COPIED IN WHOLE OR IN PART NOR LOANED OR OTHERWISE COMMUNICATED TO ANY THIRD PARTY NOR USED IN ANY MANNER DETRIMENTAL TO THE INTERESTS OF INPRO COMPANIES, INC. ACCEPTANCE OF THIS DRAWING WILL BE CONSTRUED AS AN AGREEMENT TO THE ABOVE.	U.S. PATENTS:		INPRO/SEAL		 <b>INPRO</b>
REVS:			5,378,000	5,069,461	BEARING ISOLATOR		
REVS:			5,335,921	4,989,883	DATE 24 SEPT 03	TN07701	
			5,221,095	4,706,968	AND OTHERS PENDING		
			5,161,804	4,466,620			
			5,158,304	4,304,409			
			5,137,049	4,175,752			
			5,074,567	4,114,902			