

**CASE
HISTORY
REPORT**



INPRO/SEAL

Company name: **LUFKIN FRANCE**

Location: **Fougerolles-France**

Industry : **Gearboxes manufacturer**

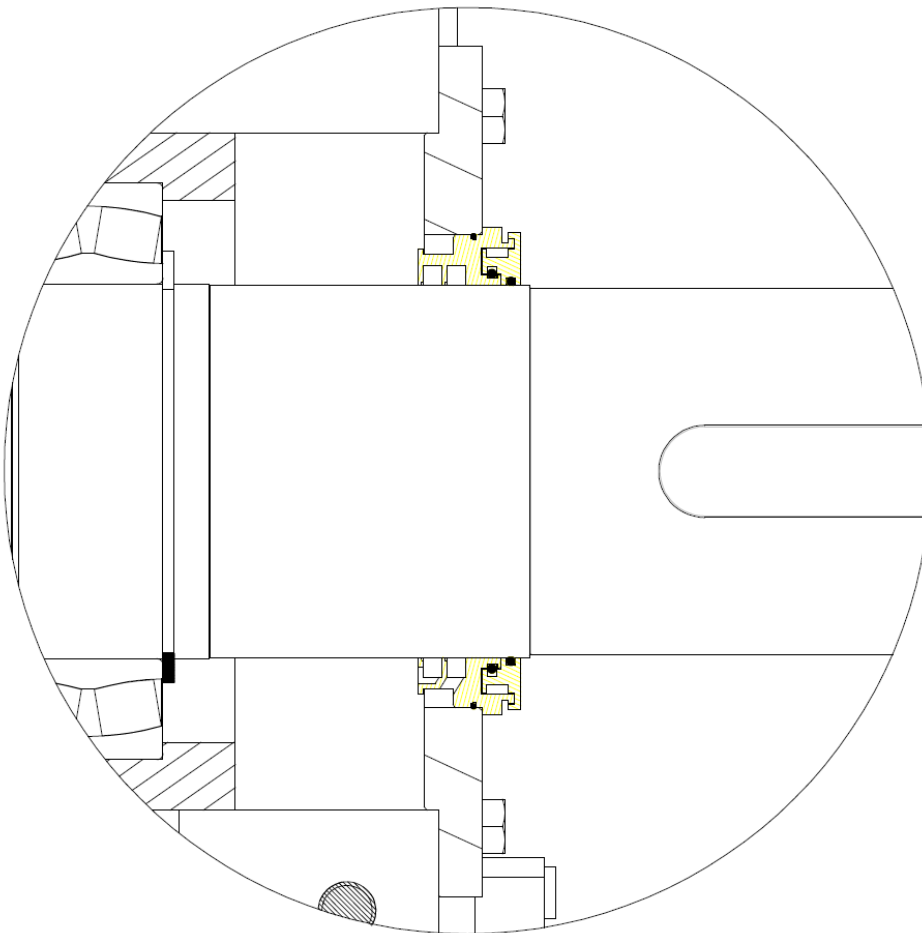
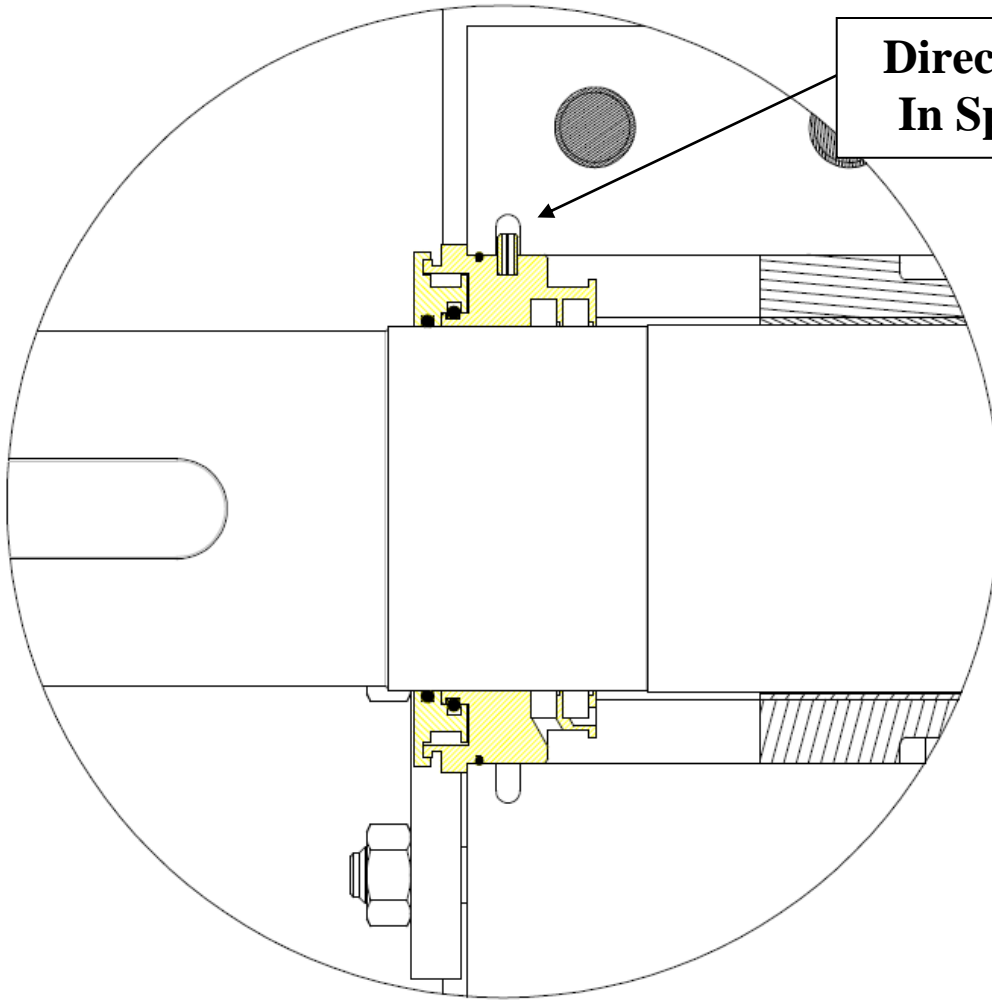
Founded in 1902, Lufkin Industries has specialized in gears for industrial applications for over 60 years. In November 1998, LUFKIN acquired COMELOR, a company founded in 1941 and located in Fougerolles, France. COMELOR now known as LUFKIN FRANCE.

In 2006 for an order of 9 horizontal shaft gearboxes of cooling fan tower from Petrochemical plant in Middle East, they ordered 18 INPRO/SEAL labyrinths. The installation and test of these Bearing Isolators have been a success.

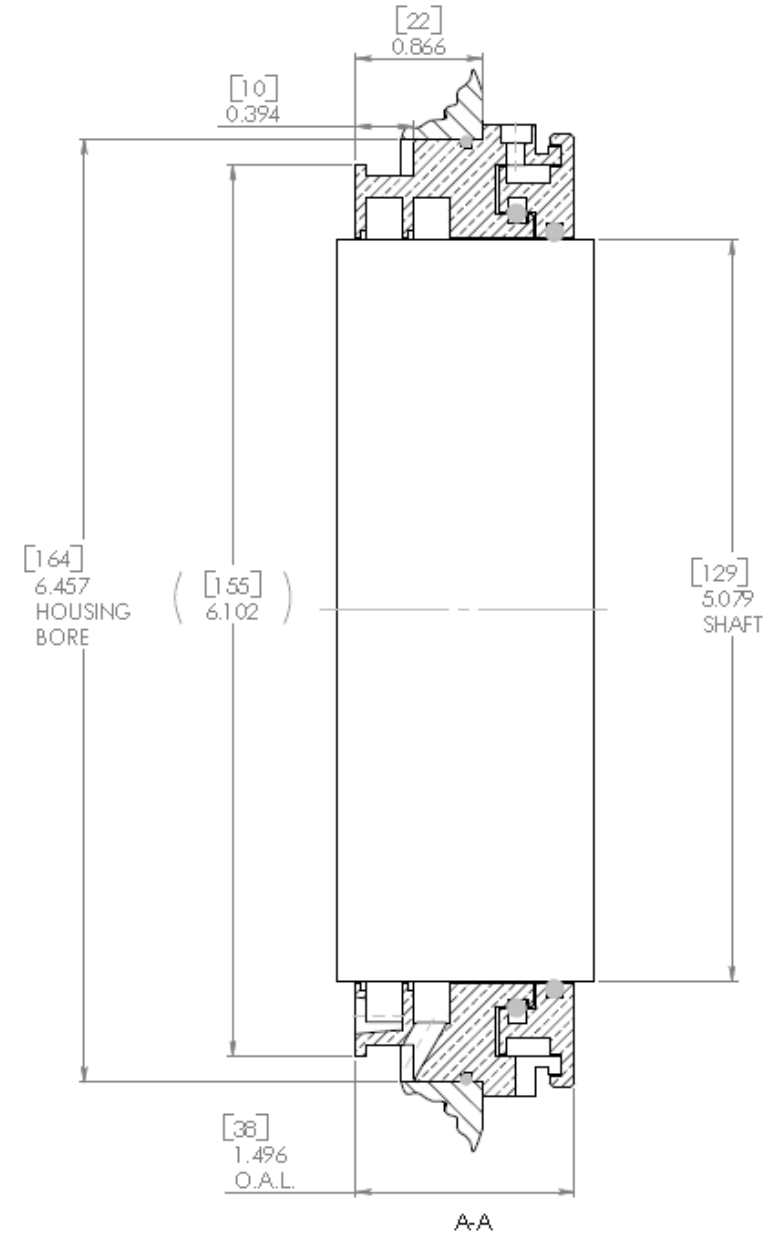
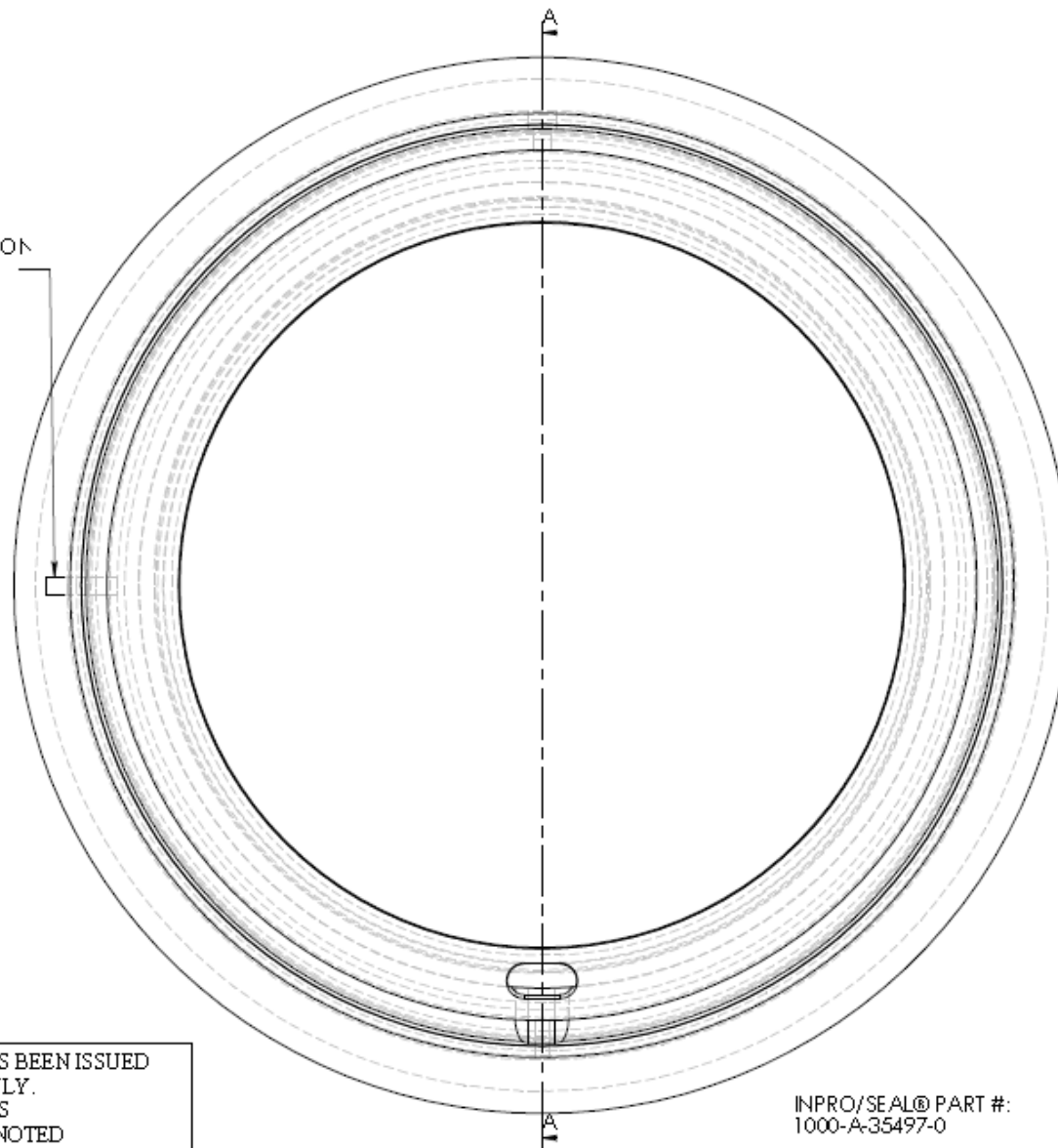
At this date Lufkin – France proposes regularly Inpro/Seal Bearing Isolator during maintenance operation in their repair shop.



**Direct mounting
In Split Casing**



125° X .500° ANTI-ROTATION
2° IN @ 90° CLOCK



INPRO/SEAL® PART #:
1000-A-35497-0

THIS DRAWING HAS BEEN ISSUED
FOR APPROVAL ONLY.

- APPROVED AS IS
- APPROVED AS NOTED
- NOT APPROVED

APPROVED SIGNATURE



THE BEARING ISOLATOR DESIGN AND PRINCIPLES
DESCRIBED HEREIN ARE THE PROPERTY OF
INPRO/SEAL COMPANY AND IS TO BE KEPT IN THE
CONFIDENTIALITY OF THE COMPANY AND IS NOT TO BE
REPRODUCED OR TRANSMITTED IN ANY FORM OR BY
ANY MEANS, ELECTRONIC OR MECHANICAL, INCLUDING
PHOTOCOPYING, RECORDING, OR BY ANY INFORMATION
SYSTEMS WITHOUT PERMISSION IN WRITING FROM
INPRO/SEAL COMPANY. ANY VIOLATION OF THIS
STATEMENT WILL BE CONSIDERED AS AN
ACT OF INFRINGEMENT.

U.S. PATENTS

7,093,403 6,082,585 5,174,553
7,052,014 5,951,030 5,155,504
6,419,253 5,985,441 5,154,049
6,211,954 5,495,008 5,074,387
6,254,459 5,375,000 5,069,481
5,355,921 4,989,823
5,221,095 4,333,350

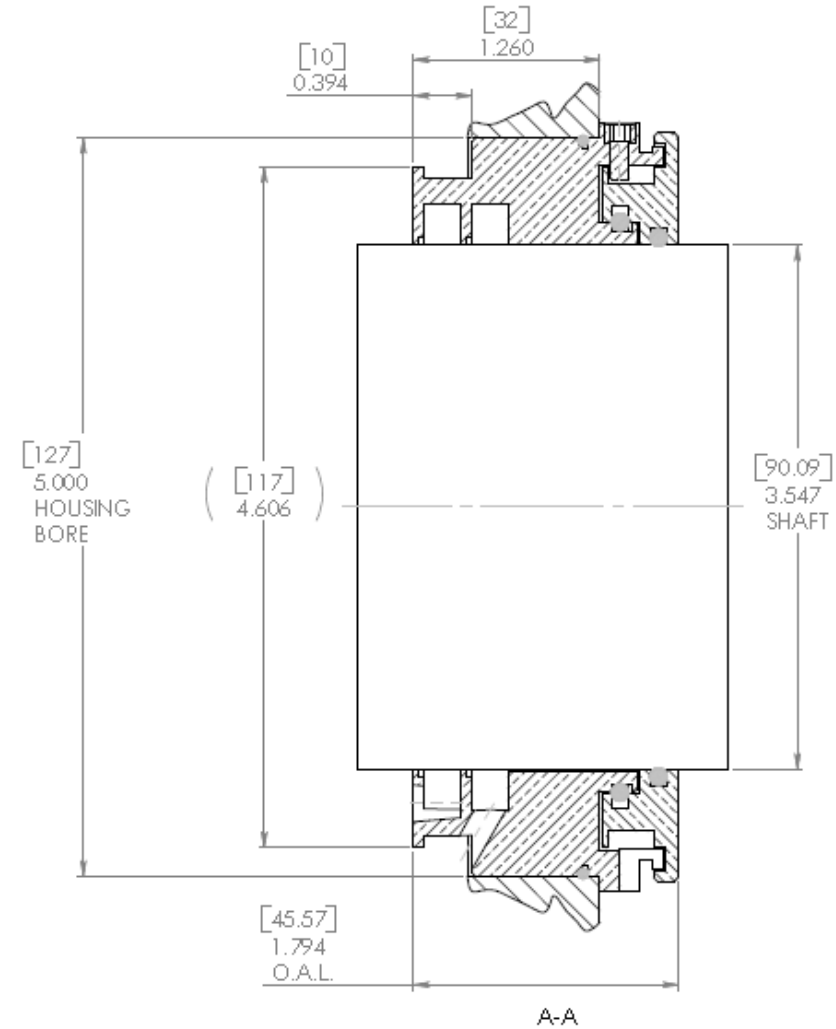
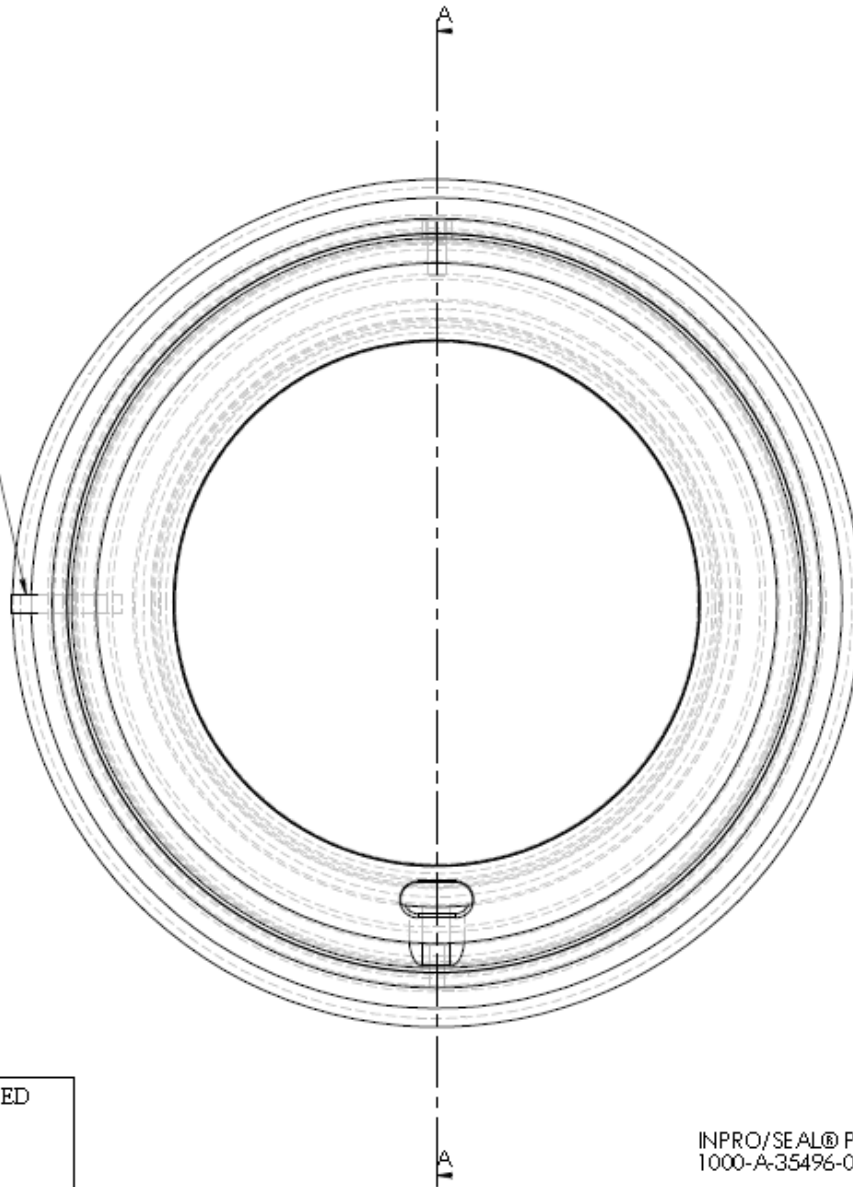
AND OTHERS PENDING

INPRO/SEAL BEARING ISOLATOR

DATE 20 JUN 08 DRAWN BY: MGP

TN13810

.125" X .500" ANTI-ROTATION
PIN @ 9 O'CLOCK



THIS DRAWING HAS BEEN ISSUED
FOR APPROVAL ONLY.

- APPROVED AS IS
- APPROVED AS NOTED
- NOT APPROVED

APPROVED SIGNATURE

INPRO/SEAL® PART #:
1000-A-35496-0



THIS DRAWING IS THE PROPERTY OF INPRO/SEAL CORPORATION AND IS TO BE USED ONLY FOR THE PURPOSES SPECIFIED HEREIN. IT IS NOT TO BE REPRODUCED OR COPIED IN WHOLE OR IN PART FOR ANY OTHER COMPANY OR INDIVIDUAL WITHOUT THE WRITTEN PERMISSION OF INPRO/SEAL CORPORATION. ANY VIOLATION OF THIS DRAWING WILL BE CONSIDERED AS AN ACT OF INFRINGEMENT.

U.S. PATENTS
7,093,403 6,082,585 5,374,553
7,052,014 5,951,030 5,155,304
6,419,225 5,265,441 5,154,049
6,511,954 5,495,008 5,374,587
6,254,459 5,275,000 5,069,481
5,355,921 4,959,833
5,221,065 4,352,350
AND OTHERS PENDING

INPRO/SEAL BEARING ISOLATOR

DATE 20 JUN 08 DRAWN BY: MGP

TN13811