

CASE HISTORY REPORT



INPRO/SEAL

Company : **TOTAL PETRO**

Location: **Harfleur - FRANCE**

Industry: **PETROCHEMICAL PLANT
STEAM CRACKING PLANT**

Application : **Cooling Tower
Gearbox**

The TOTAL petrochemical plant at HARFLEUR produces plastics from naphta.

The cooling tower gearboxes are regularly repaired because of bearing failure. The high level of humidity is responsible for contamination.

TOTAL PETRO started to install INPRO/SELA Bearing Isolator on Horizontal and Vertical shaft of A MESSIAN gearboxes.

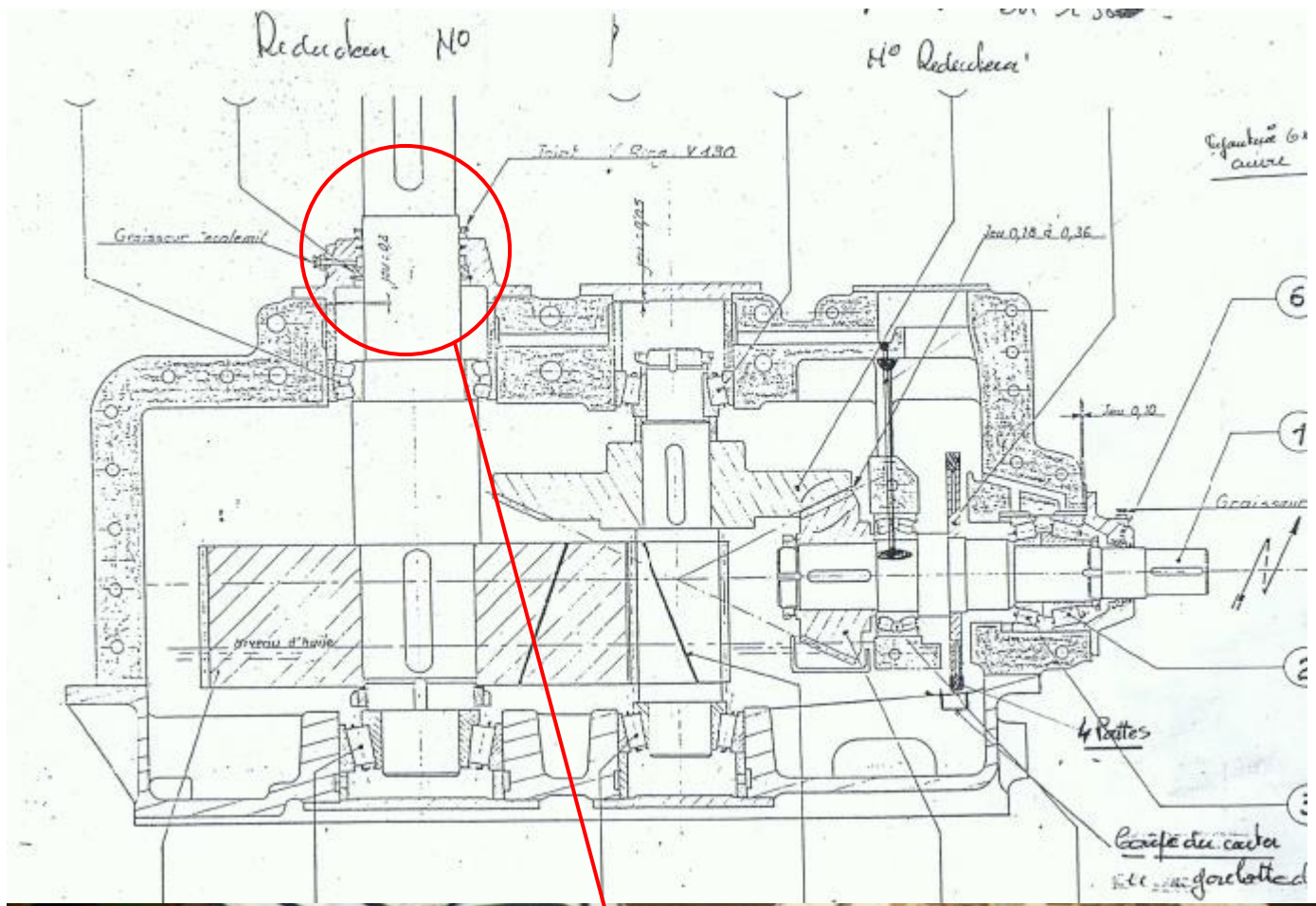
Up to date **NO CONTAMINATION** has been found in the oil.

TOTAL
PETROCHEMICALS

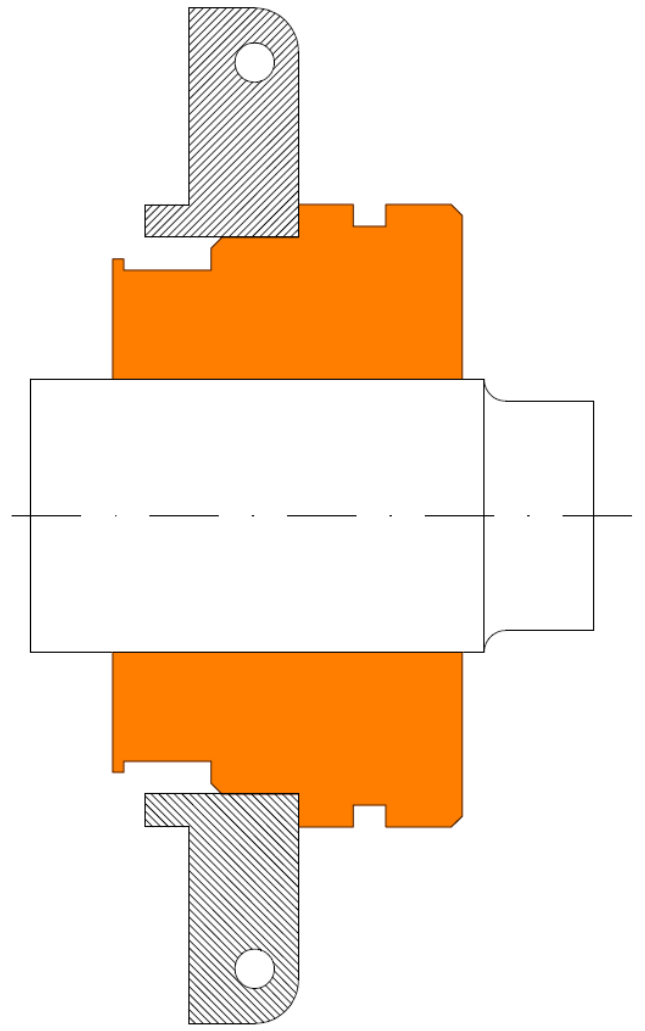
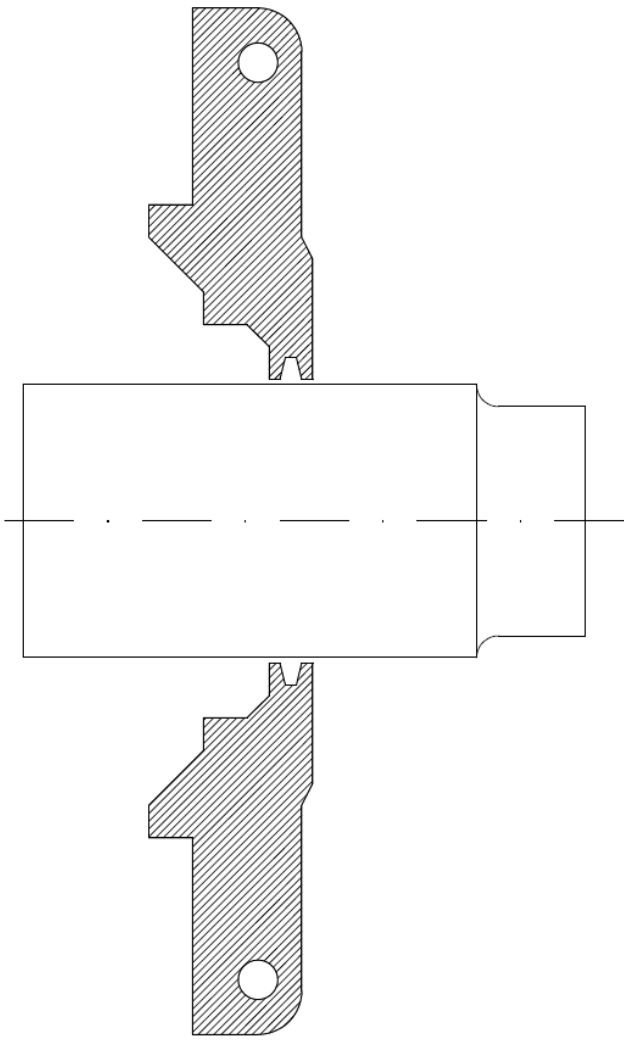


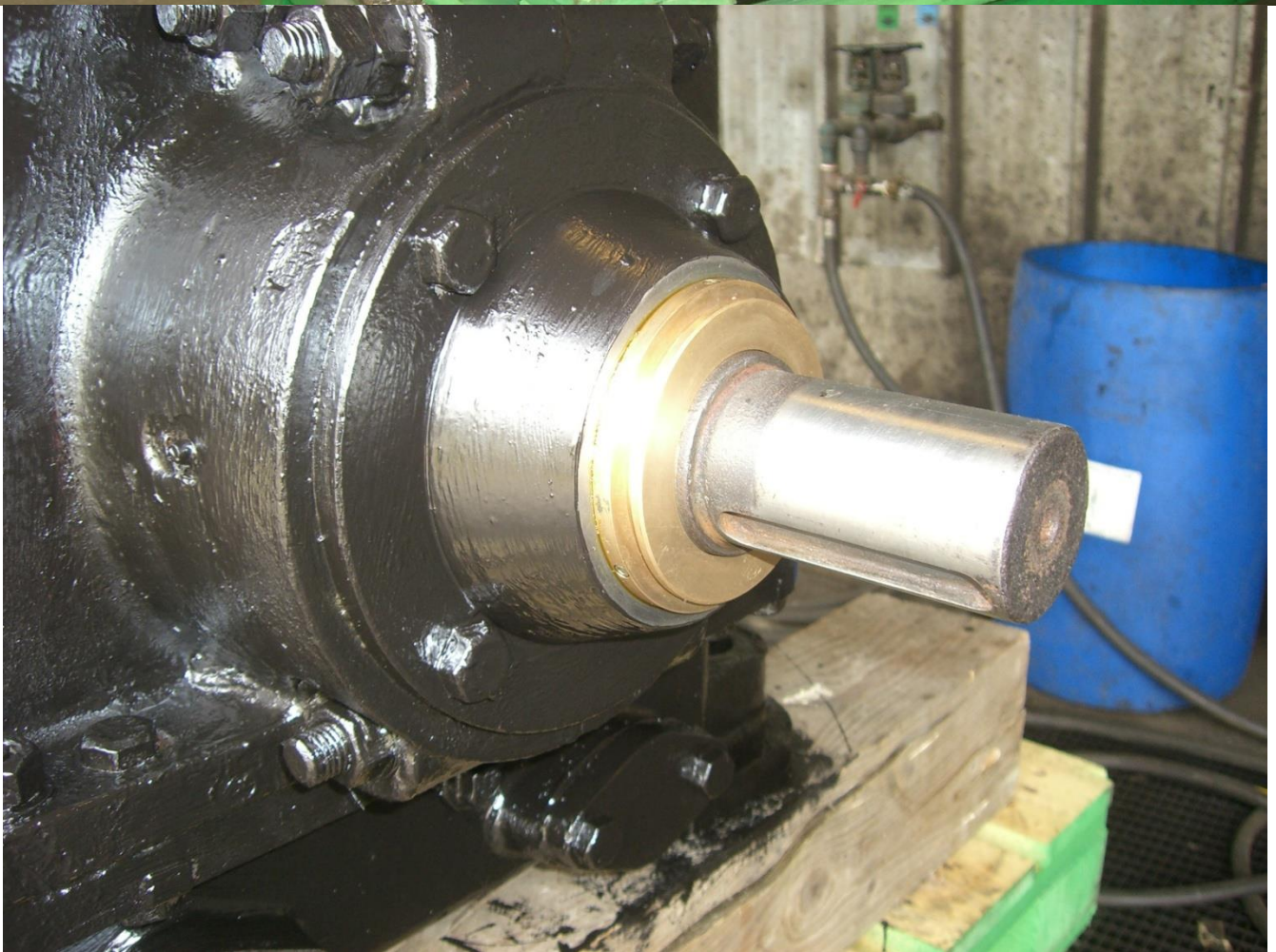
TECHNICAL DESCRIPTION:

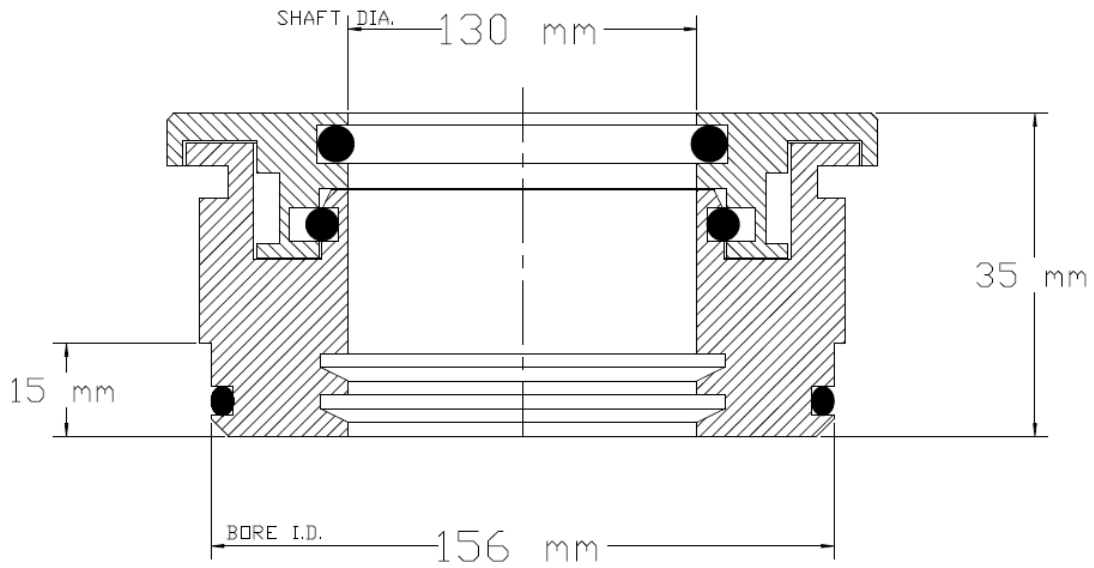
Inpro/Seal : VBXX VERTICAL UP DESIGN – 130 mm OAL, Ø 156 mm.
VBXX DOUBLE D OIL GROOVE, Ø 65 mm.



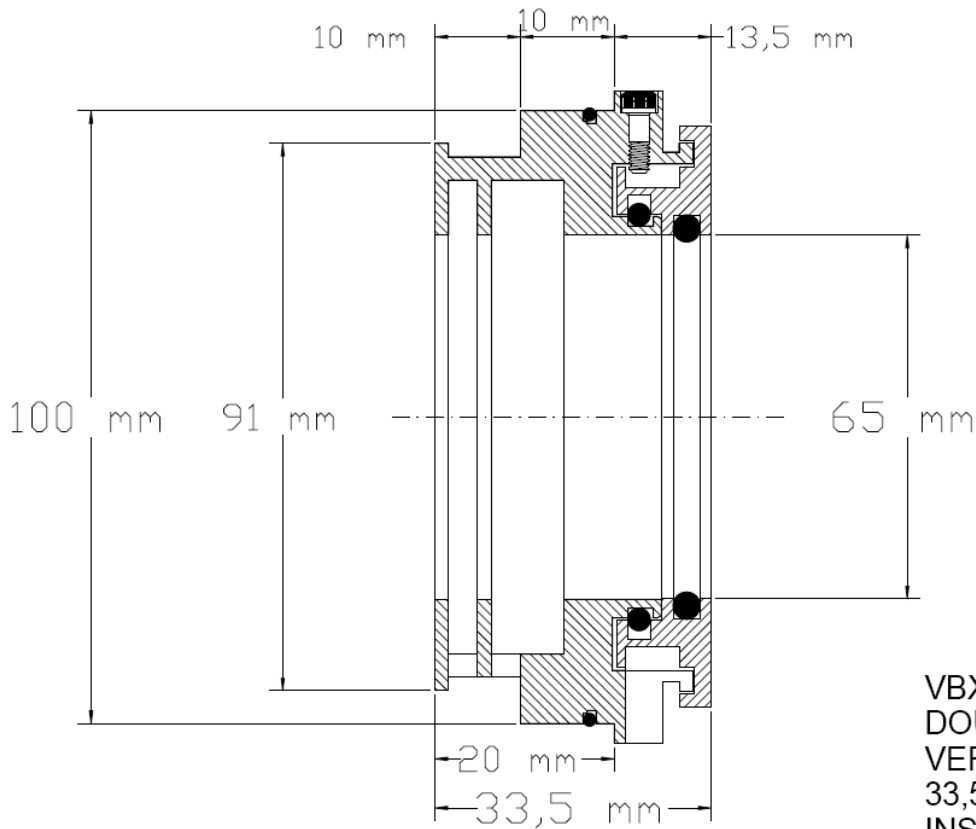









**VBXX VERTICAL UP HIGH HEAD
35 mm OAL WITH 15 mm INSERTION
AND NO EXPULSION PORTS**



THIS PRINT HAS BEEN ISSUED FOR APPROVAL ONLY.
 APPROVED AS IS.
 APPROVED AS NOTED.
 NOT APPROVED.

 APPROVED SIGNATURE

**VBXX CAP LOCK DESIGN
DOUBLE D OIL GROOVE
VERTICAL OIL DRAINS
33,5 mm OAL WITH 20 mm
INSERTION**

REVS:	TDC	THIS DRAWING INCLUDING THE DESIGN AND PRINCIPLES OF CONSTRUCTION DISCLOSED IS THE PROPERTY OF INPRO/SEAL COMPANY, AND IS SUBMITTED WITH THE UNDERSTANDING THAT IT IS NOT TO BE REPRODUCED NOR COPIED IN WHOLE OR IN PART NOR LOANED OR OTHERWISE COMMUNICATED TO ANY THIRD PARTY NOR USED IN ANY MANNER DETRIMENTAL TO THE INTERESTS OF INPRO/SEAL COMPANY. ACCEPTANCE OF THIS DRAWING WILL BE CONSTRUED AS AN AGREEMENT TO THE ABOVE.	U.S. PATENTS:			INPRO/SEAL BEARING ISOLATOR	 INPRO
REVS:			7,090,403	5,865,441	5,158,304		
			6,419,233	5,378,000	5,074,567		
			6,311,984	5,335,921	5,069,461		
			6,234,489	5,221,095	4,989,883		
			6,062,568	5,174,583	4,832,350		
76040-2009-01.pdf			5,951,020	AND OTHERS PENDING		DATE	Based on: TN14350