

CASE HISTORY REPORT



INPRO-SEAL-EUROPE : 2010-02

INPRO/SEAL

Company : **LANXESS**

Location: **La Wantzenau - France**

Industry: **Petrochemical**

Application : **Gearbox**

Lanxess elastomer at La Wantzenau (Strasbourg – 67) produces synthetic elastomer.

They regularly have oil leakage on inboard shaft of gearbox. The existing seal is a standard lip seal.

In 2008 MD Distribution proposed the installation of a 16 mm OAL High Head Reverse Mount installation. There is no contamination around and not enough space for Double Oil groove with Vertical oil drain.

Lanxess also appreciate that this INPRO/SEAL can be delivered with Atex certification

To date no failure has been observed and 3 more gearboxes have been equiped.



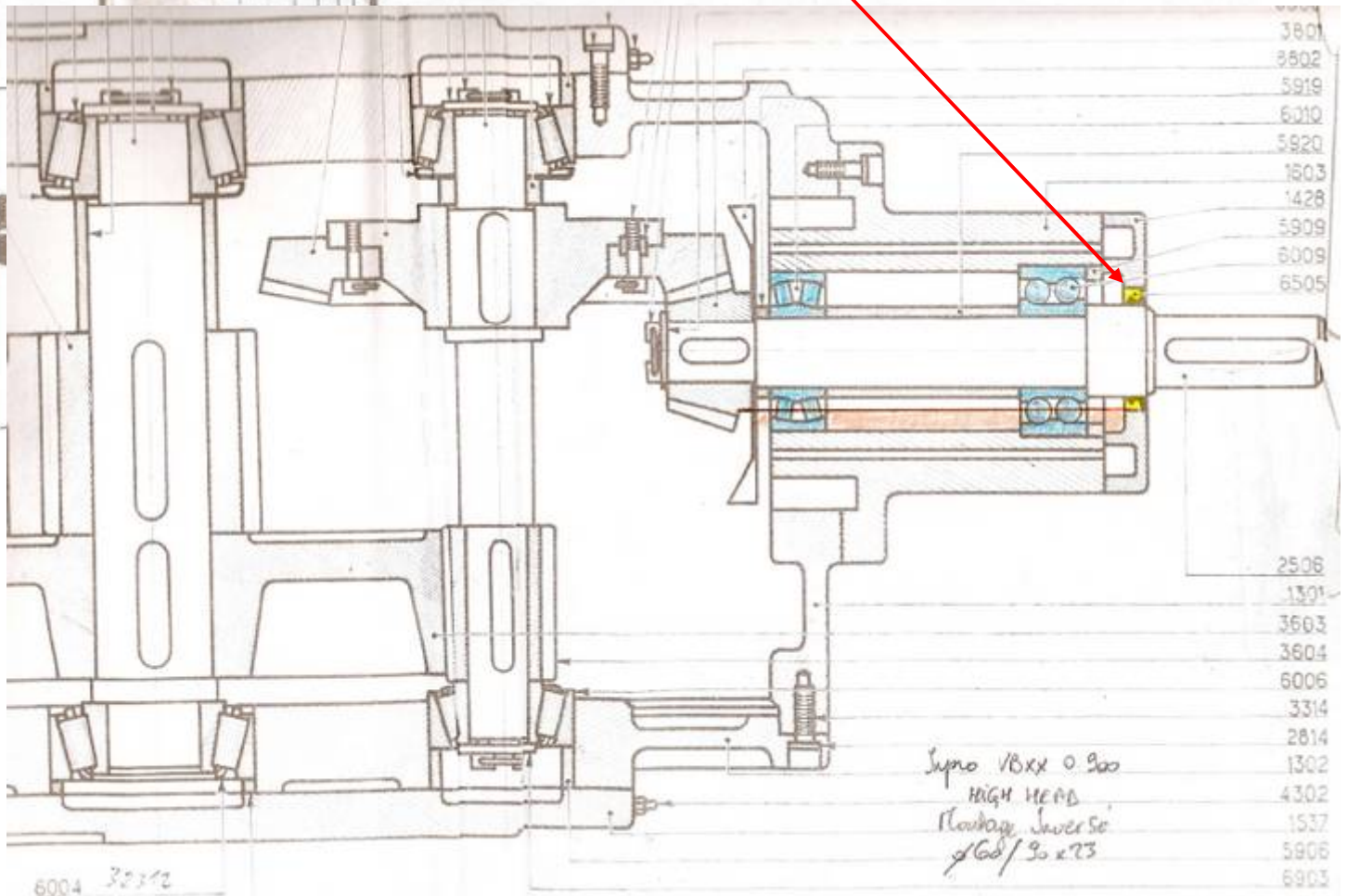
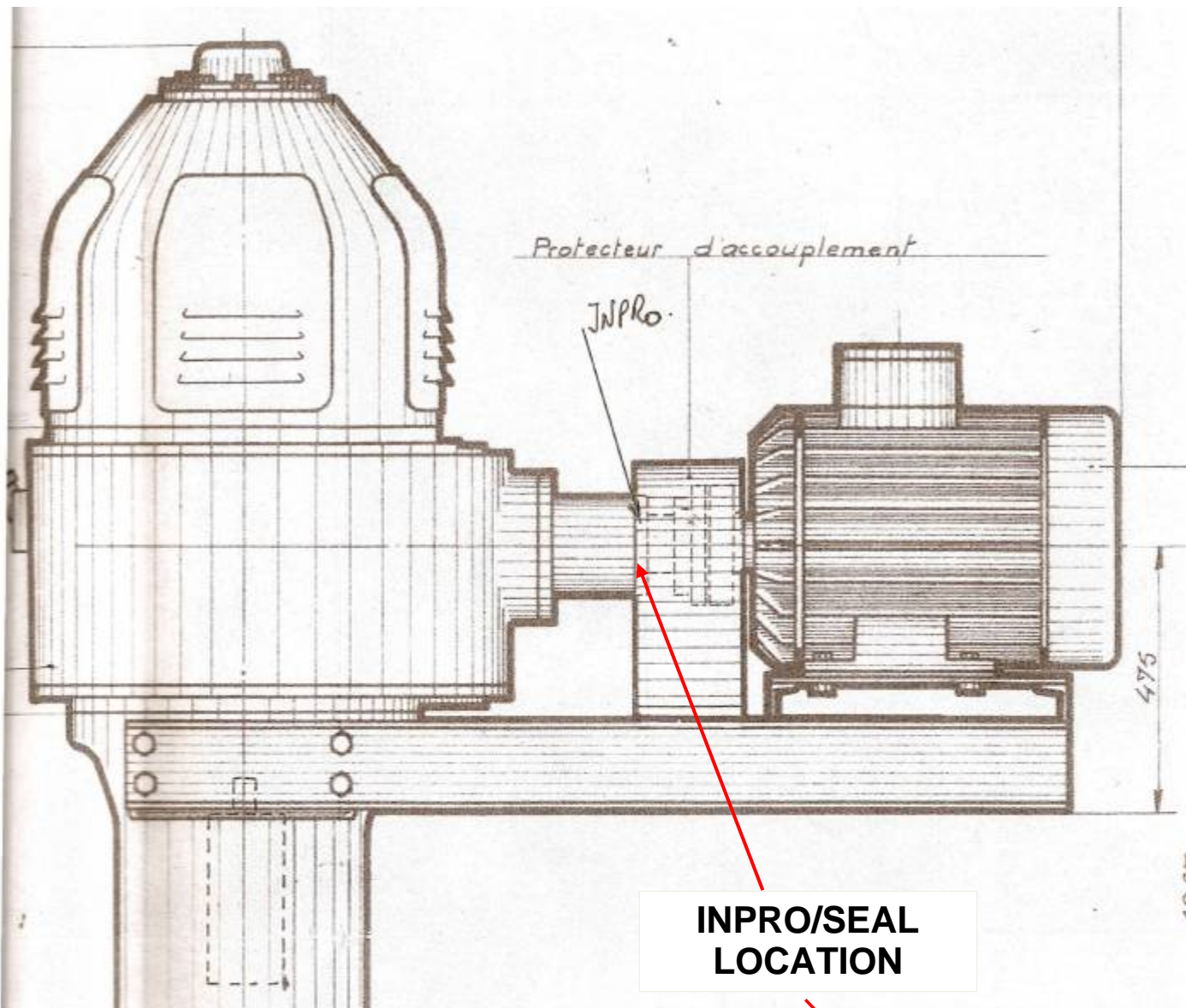
LANXESS
Energizing Chemistry

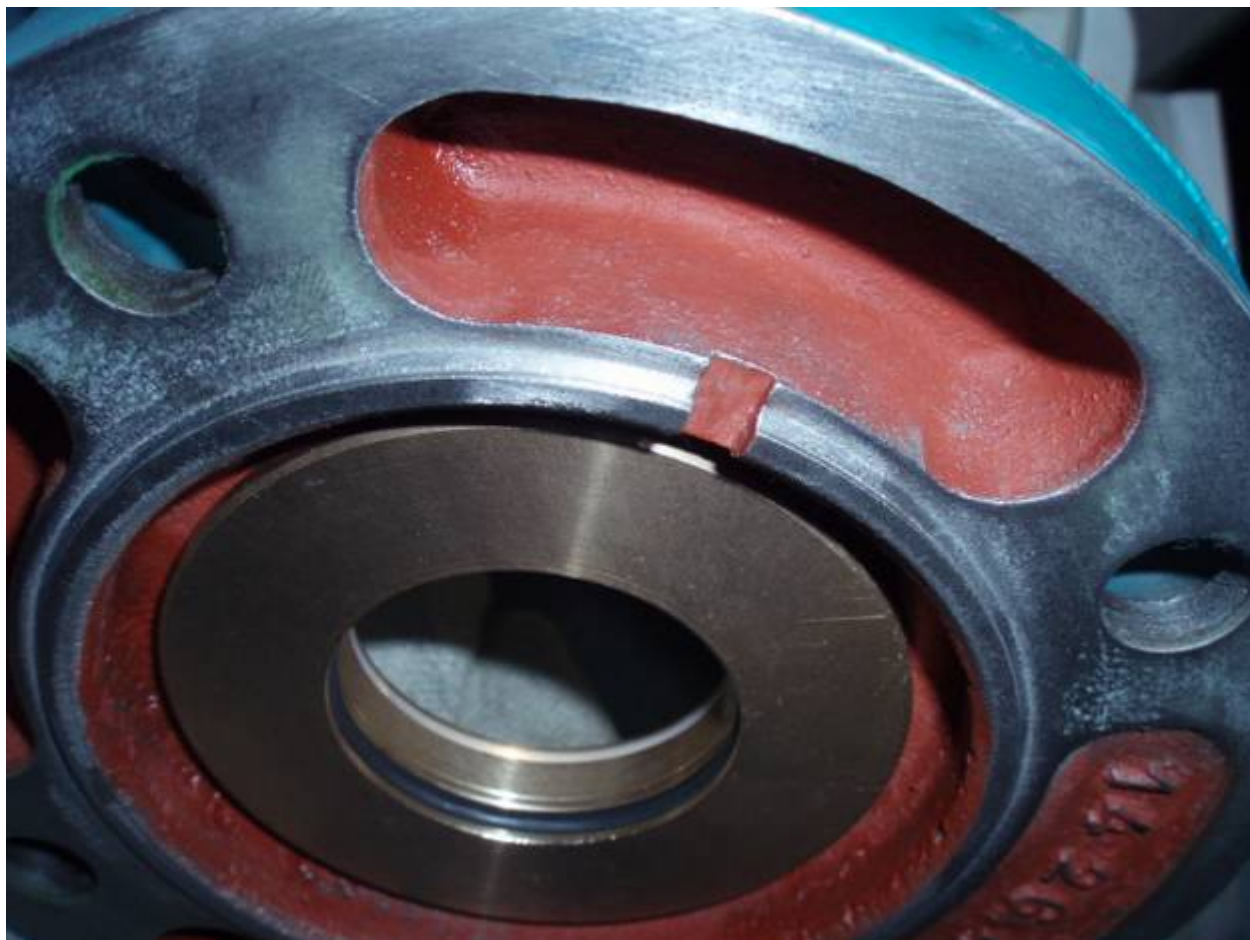


TECHNICAL DESCRIPTION:

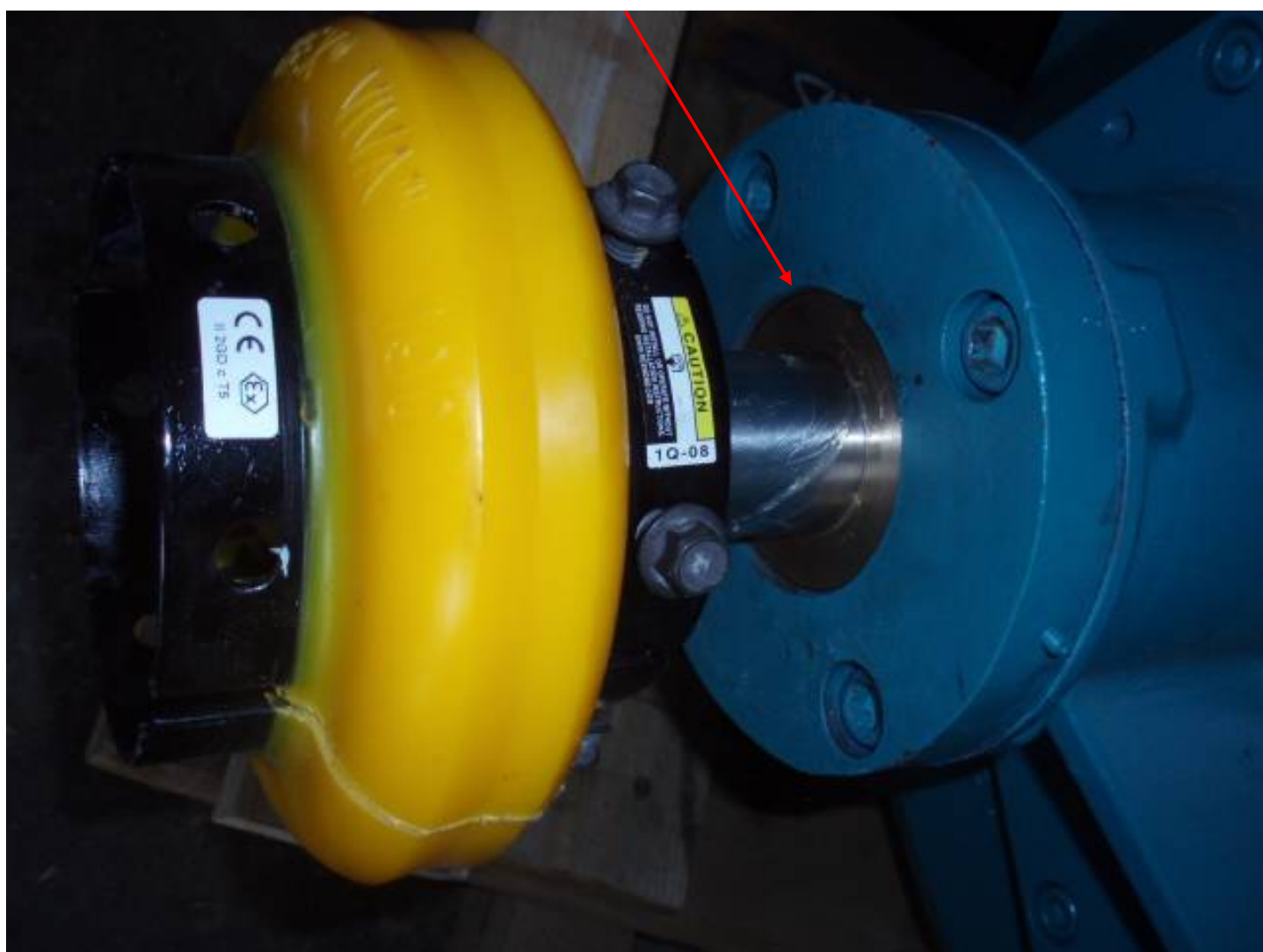
MASSON Gearbox, horizontal inboard shaft.

Inpro/Seal : VBXX- HIGH HEAD REVERSE MOUNTING
Ø 48 mm x 80 – 16 mm P/N°: 1601-A-40684-55





INPRO/SEAL



BEARING SIDE

