

CASE HISTORY REPORT



INPRO-SEAL-EUROPE : 2010-01

INPRO/SEAL

Company : **LANXESS**
Industry: **Petrochemical**

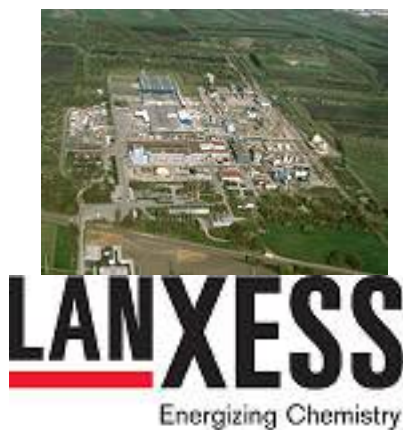
Location: **La Wantzenau - France**
Application : **Pillow Block**

Lanxess elastomer at La Wantzenau (Strasbourg – 67) produces synthetic elastomer.

They regularly have pillow block failure on archimede screw conveyor. The leakage from stuffing box is a mixture of elastomer and water + soda. The screw have to be stopped and repaired every 3 – 4 months.

In 2008 MD Distribution proposed the installation of 4 INPRO/SEAL Sphere Align on two equipments.

To date no failure and no stop of the equipment have been observed.

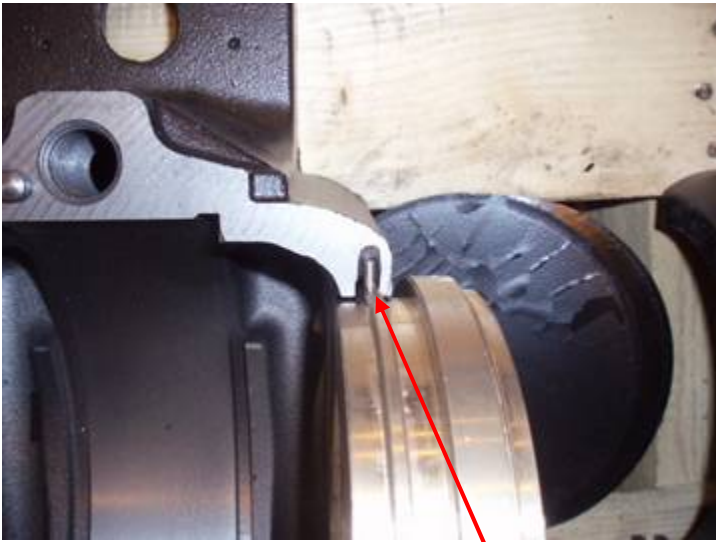


TECHNICAL DESCRIPTION:

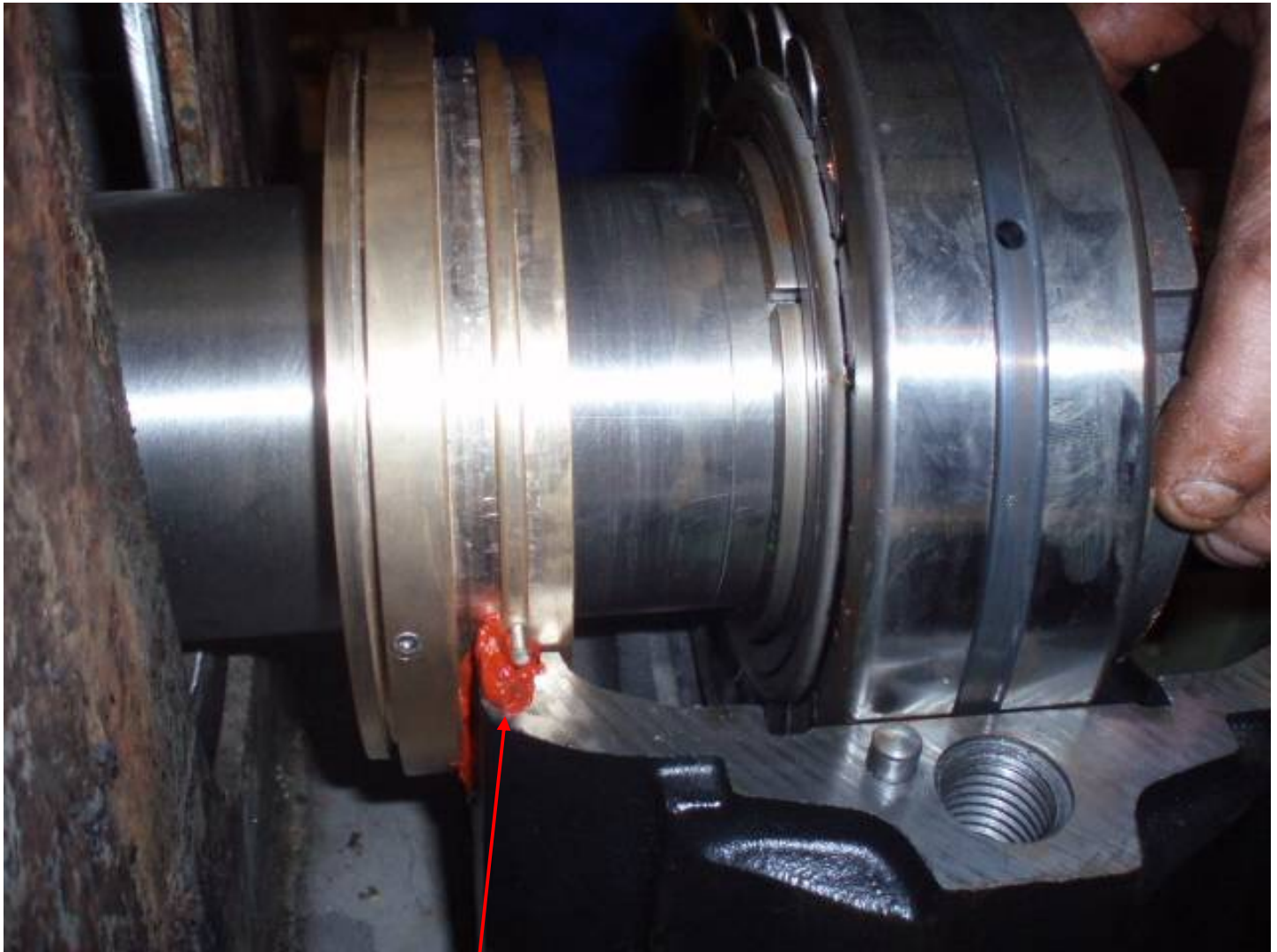
Split Pillow Block SKF - SNH 520-617

Inpro/Seal : VBXX-CAP LOC SPHERE ALIGN
Ø 90 mm P/N°: 1401-A-42269-0





Anti Rotation Pin Groove



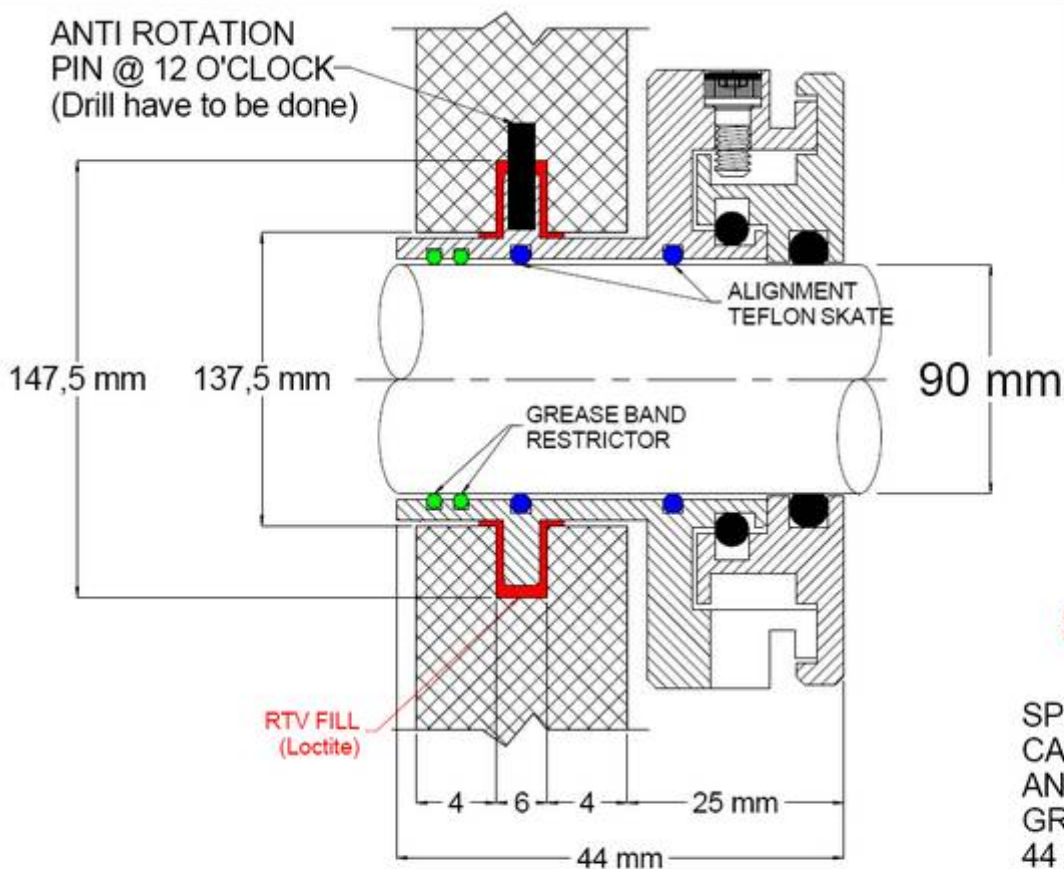
Loctite®



ANTI ROTATION
PIN @ 12 O'CLOCK
(Drill have to be done)


THIS PRINT HAS BEEN ISSUED
FOR APPROVAL ONLY.
☐ APPROVED AS IS.
☐ APPROVED AS NOTED.
☐ NOT APPROVED.

APPROVED SIGNATURE



SNH 520-617

SPHERE ALIGN RTV FILL
CAP LOCK DESIGN WITH
ANTI-ROTATION PIN AND
GREASE RESTRICTORS
44 mm OAL

REVS:	WLS	THIS DRAWING INCLUDING THE DESIGN AND PRINCIPLES OF CONSTRUCTION DISCLOSED IS THE PROPERTY OF INPRO COMPANIES, INC. AND IS SUBMITTED WITH THE UNDERSTANDING THAT IT IS NOT TO BE REPRODUCED NOR COPIED IN WHOLE OR IN PART NOR LOANED OR OTHERWISE COMMUNICATED TO ANY THIRD PARTY NOR USED IN ANY MANNER DETRIMENTAL TO THE INTERESTS OF INPRO COMPANIES, INC. ACCEPTANCE OF THIS DRAWING WILL BE CONSTRUED AS AN AGREEMENT TO THE ABOVE.	U.S. PATENTS:	INPRO/SEAL	BEARING ISOLATOR	 INPRO
REVS:			5,378,000 5,069,461 5,335,921 4,989,883 5,221,095 4,706,968 5,161,804 4,466,620 5,158,304 4,304,409 5,137,049 4,175,752 5,074,567 4,114,902	DATE		
67233-2008-05.pdf				AND OTHERS PENDING		